

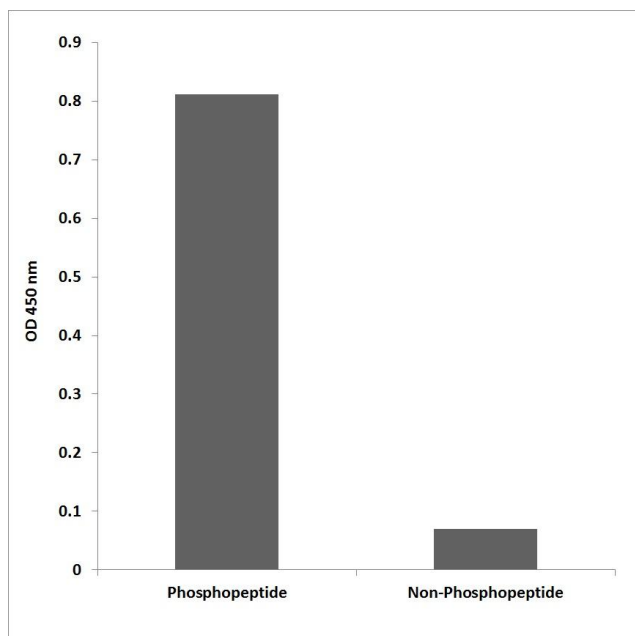


# ZFP598 (phospho Tyr306) Polyclonal Antibody

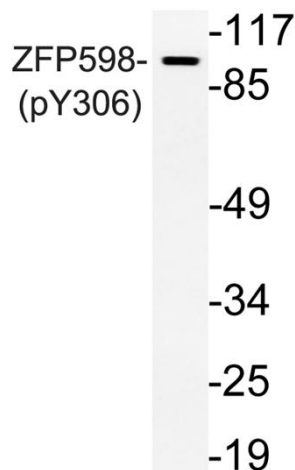
<b>Catalog No</b>	YP-Ab-01286
<b>Isotype</b>	IgG
<b>Reactivity</b>	Human;Mouse
<b>Applications</b>	WB;IHC;IF;ELISA
<b>Gene Name</b>	ZNF598
<b>Protein Name</b>	Zinc finger protein 598
<b>Immunogen</b>	Synthesized phospho-peptide around the phosphorylation site of human ZFP598 (phospho Tyr306)
<b>Specificity</b>	Phospho-ZFP598 (Y306) Polyclonal Antibody detects endogenous levels of ZFP598 protein only when phosphorylated at Y306.
<b>Formulation</b>	Liquid in PBS containing 50% glycerol, 0.5% BSA and 0.02% sodium azide.
<b>Source</b>	Polyclonal, Rabbit,IgG
<b>Purification</b>	The antibody was affinity-purified from rabbit antiserum by affinity-chromatography using epitope-specific immunogen.
<b>Dilution</b>	WB: 1/500 - 1/2000. IHC: 1/100 - 1/300. ELISA: 1/10000.. IF 1:50-200
<b>Concentration</b>	1 mg/ml
<b>Purity</b>	≥90%
<b>Storage Stability</b>	-20°C/1 year
<b>Synonyms</b>	ZNF598; Zinc finger protein 598
<b>Observed Band</b>	99kD
<b>Cell Pathway</b>	
<b>Tissue Specificity</b>	Lung,Melanoma,Skin,Spleen,T-cell,
<b>Function</b>	similarity:Contains 1 C2H2-type zinc finger.,similarity:Contains 1 RING-type zinc finger.,
<b>Background</b>	zinc finger protein 598(ZNF598) Homo sapiens Zinc-finger proteins bind nucleic acids and play important roles in various cellular functions, including cell proliferation, differentiation, and apoptosis. This protein and Grb10-interacting GYF protein 2 have been identified as a components of the mammalian 4EHP (m4EHP) complex. The complex is thought to function as a translation repressor in embryonic development. [provided by RefSeq, Oct 2012],
<b>matters needing attention</b>	Avoid repeated freezing and thawing!
<b>Usage suggestions</b>	This product can be used in immunological reaction related experiments. For more information, please consult technical personnel.



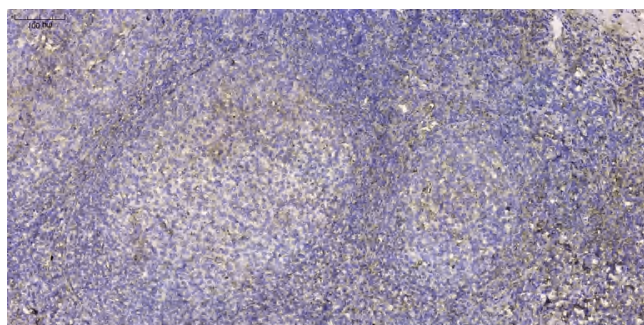
## Products Images



Enzyme-Linked Immunosorbent Assay (Phospho-ELISA) for Immunogen Phosphopeptide (Phospho-left) and Non-Phosphopeptide (Phospho-right), using ZFP598 (Phospho-Tyr306) Antibody



Western blot analysis of lysate from Jurkat cells, using phospho-ZFP598 (Phospho-Tyr306) antibody.



Immunohistochemical analysis of paraffin-embedded human tonsil. 1, Antibody was diluted at 1:200(4° overnight). 2, Tris-EDTA,pH9.0 was used for antigen retrieval. 3,Secondary antibody was diluted at 1:200(room temperature, 30min).